

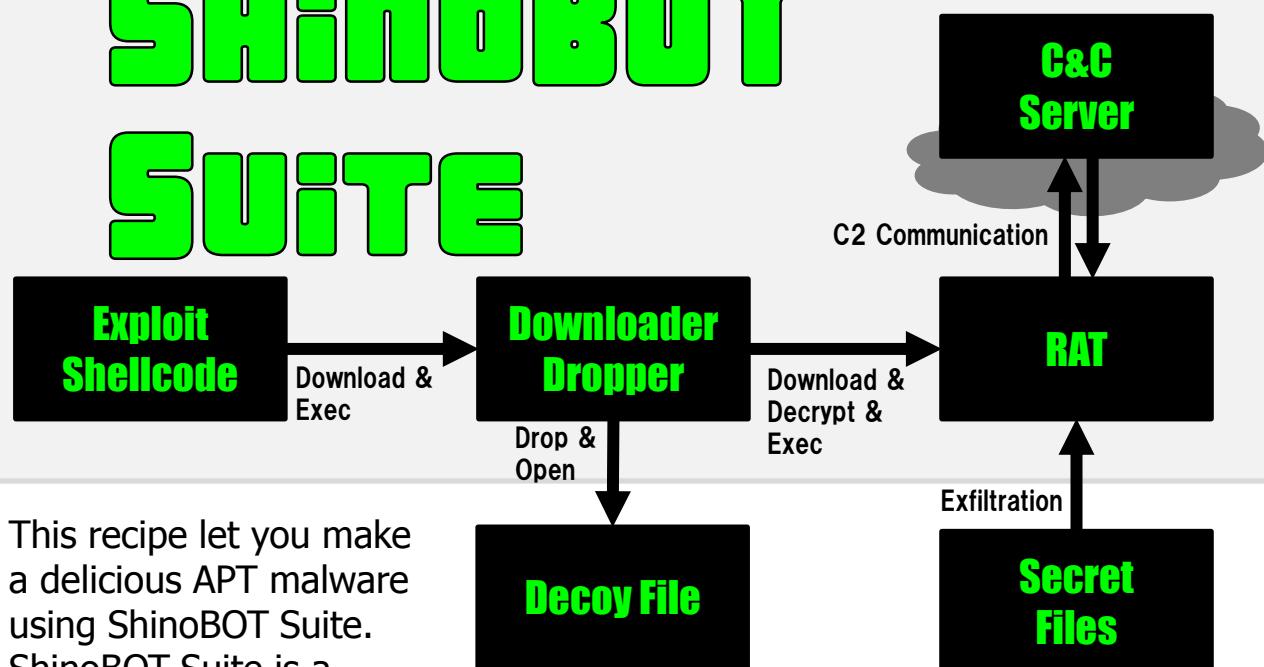
SHINOBOT SUITE

RECIPE



How to make a yummy APT

SHINOBOT SUITE



This recipe let you make a delicious APT malware using ShinoBOT Suite.

ShinoBOT Suite is a

tool-kit to help pen-testers simulate a sophisticated APT campaign with a few steps, just like a bouillon cube. Cook it, try it, and let your friend or foe eat it!

Yield: Dozens Infected Computers

Category: Targeted Attack

Prep Time: 5 min

Cook Time: 5 min



Ingredients

- 1 **ShinoBOT Suite**
ShinoDownloader.exe
ShinoBOT.exe
- 1 **Decoy File (size < 50KB)**
- 1 **Password to encrypt the RAT**
- 1 **Attacker's PC to access C&C Server (only browser needed)**

Direction

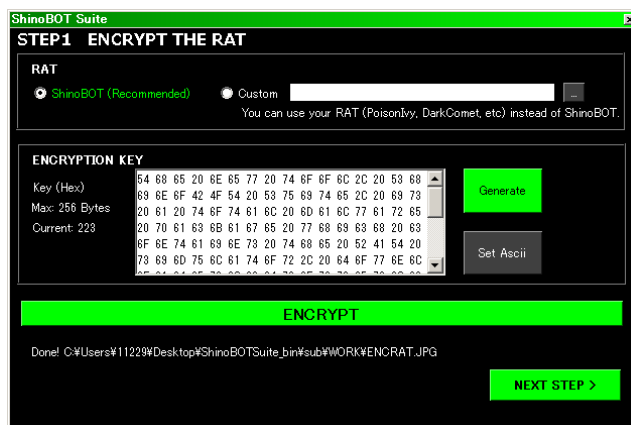
STEP0 PREPARATION

1. Prepare 1 decoy file.
A legitimate documents.
2. Download ShinoBOT Suite from ShinoSec.Com



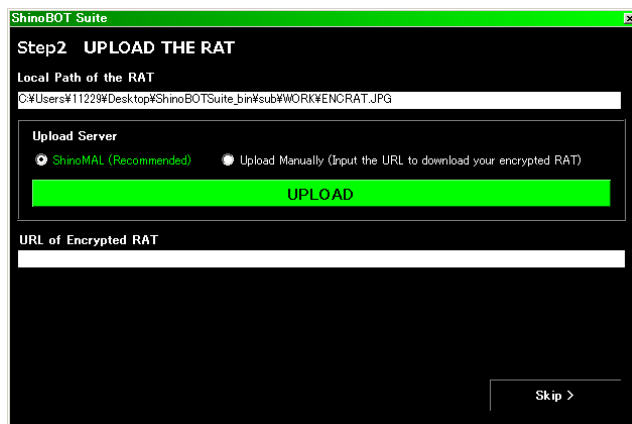
STEP1 ENCRYPT THE RAT

1. Execute [ShinoBOTSuite.exe](#).
2. Choose the RAT.
3. You can set your encryption key or password (via Set Ascii)
4. Press [Encrypt] and [Next Step]



STEP2 UPLOAD THE RAT

1. Choose the upload server (default ShinoMal.mo00.com)
2. Press [Upload] and [Next Step]



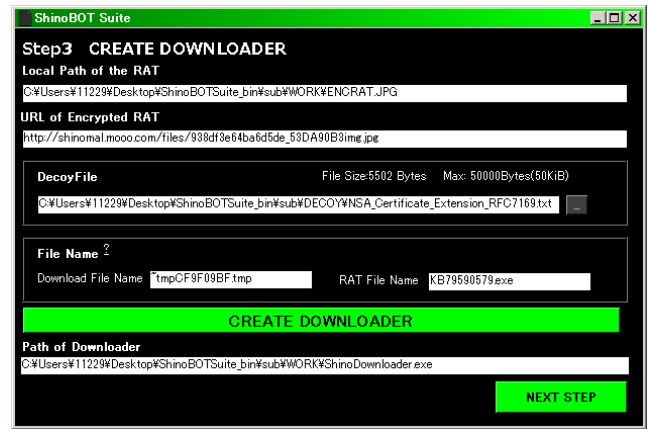
TIPS

The encrypted RAT is hidden in the kitten image. So you can upload it in some image sharing server instead of ShinoMal.mo00.com.



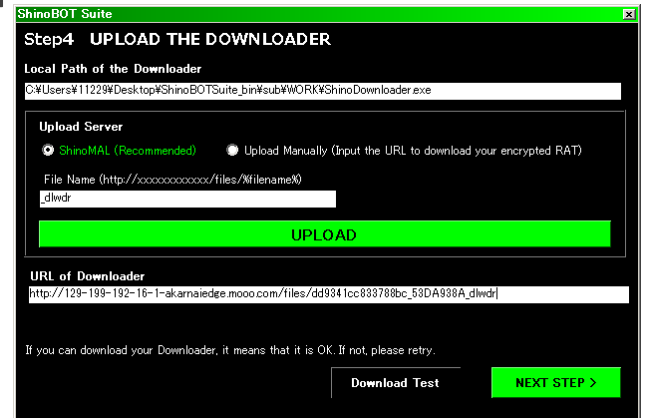
STEP3 CREATE DOWNLOADER

1. Select your decoy file. Otherwise you can use the default one.
2. Press [Create Downloader] and [Next Step]



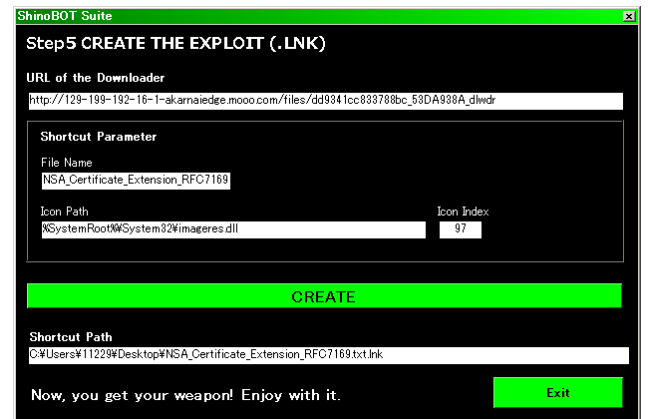
STEP4 UPLOAD THE DOWNLOADER

1. Select the upload server
2. Press [Upload] and [Next Step]



STEP5 CREATE THE EXPLOIT

1. Choose the icon path.
2. Press [Create] and [Exit].
3. The shortcut will appear on your desktop.



NUTRITION NOTE

ShinoBOT Suite contains cryptography, steganography, DGA (used in the RAT SHinoBOT.exe), shortcut attack, icon camouflage, etc. Anyway, it is very healthy.

You can send the shortcut in phishing mail. Most mail server allow the shortcut on the ZIP folder. When the victim click the shortcut, he or she will infected by the RAT without detected.

Bon Appétit!!